



SMART Response™ LE

The remotes meet Universal Design for Learning (UDL) standards, allowing students at all levels of reading or degrees of fine motor development to easily input their responses.

Gain accurate and immediate insight into student understanding for learners in early education or those with special needs. The SMART Response LE interactive response system combines wireless remotes, a receiver and powerful assessment software that integrates with SMART Notebook™ collaborative learning software. Using their handheld remotes students can answer questions, receive instant feedback and stay involved in lessons.

Gauge understanding in early and special education

SMART Response LE features easy-to-use, colorful remotes that feature a large LCD screen and big buttons with easy-to-understand symbols. The remotes meet Universal Design for Learning (UDL) standards, allowing students at all levels of reading or degrees of fine motor development to easily input their responses.

Create tests and quizzes with SMART Notebook

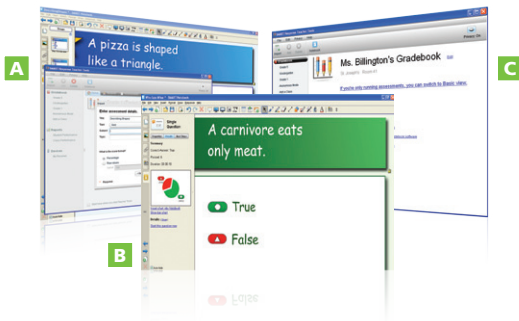
SMART Response LE integrates seamlessly with SMART Notebook software, providing you with a software application that enhances curriculum development, lesson delivery and evaluation. To get started, simply create true or false, yes or no, or multiple choice questions in SMART Notebook software. Each answer automatically corresponds to one of the five big and colorful buttons on the students' remotes.

Manage classroom data instantly and effortlessly

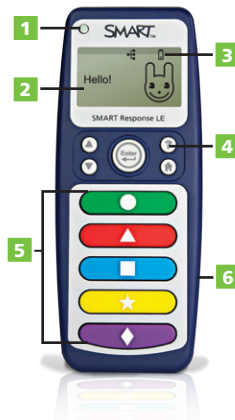
When students respond to questions, the assessment software in SMART Response LE automatically summarizes the results in a pie chart or bar graph that everyone in the classroom can see. The feedback allows teachers to determine if further review is required, giving them the opportunity to adjust their teaching and be assured that every student is following the lesson.

Evaluate student progress with assessment reports

With SMART Response LE, you can access, view and manage all assessment data in one location. Tag student names or assessment questions with keywords to track characteristics that will help you measure and evaluate performance. Create reports that are as simple or as detailed as you need.



- A** Manage data with the Teacher Tools feature
- B** Create and deliver quizzes in SMART Notebook software
- C** Track student performance with built-in gradebook



- 1** Power button
- 2** Large LCD screen display
- 3** Battery status icon
- 4** Student question button
- 5** Student response buttons
- 6** UDL-friendly design

Key features

Integration with SMART Notebook software

Open SMART Response LE from a tab in SMART Notebook software. With its Gallery of more than 6,600 pieces of graphic-rich content you can add images and other multimedia to any question or assessment.

Multiple assessment options

Compile tests for formative and summative assessment, prepare quizzes or exams in advance and ask spontaneous questions to gauge students' understanding.

Question variety

Ask different types of questions, including true or false, yes or no and multiple choice.

Anonymous mode

Allow your students to respond with complete anonymity. Students can use SMART Response LE without signing in.

Comprehensive gradebook

Use the built-in gradebook to access reports that are automatically collected and saved to one easy-to-access file. You can also use the built-in gradebook to track student performance and record test results throughout the year.

Content pages

Insert content pages between questions to enhance any quiz, test or exam.

Import content

Use questions from third-party question banks or import questions from Microsoft® applications and other commonly used software programs.

Weighted marking

Assign different point values to individual questions within a test or quiz.

Tagging

Tag student names and assessment questions with keywords to track specific characteristics that will help you measure and evaluate student performance.

Remotes

Radio frequency technology

The system provides a reliable and convenient wireless connection between the student remotes and receiver. You don't need a line of sight, and the remote has a range of up to 100 feet (30 m).

Batteries

Each remote uses two AA batteries.

Receiver

Convenient maintenance feature

View power status through LED lights on the receiver.

Easy connection and installation

Connect the receiver to a computer using a USB connection. The receiver can either be mounted on a wall or placed on a desk. No extra power supply is required.

Physical Specifications

Receiver Size

4 3/4" W x 7/8" H x 2 1/4" D
(12 cm x 2.2 cm x 5.7 cm)

Receiver Weight

5 3/4 oz. (165 g)

Remote Size

2 1/4" W x 5 5/8" H x 1 1/8" D
(5.7 cm x 14.2 cm x 2.8 cm)

Remote Weight

7 1/4 oz. (100 g) without batteries

Authorized Reseller:

SMART Technologies

Toll Free 1.866.518.6791 (U.S./Canada)

or +1.403.228.5940

smarttech.com